



CABINS





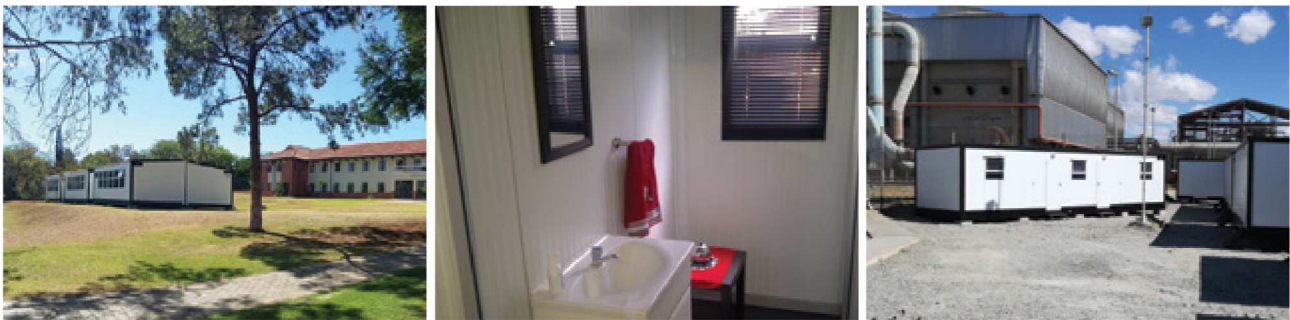
Aesthetically pleasing relocatable buildings for short or long term rental.

Cabins are relocatable buildings that are fabricated off-site, easy to transport, and assembled on-site. From a single site office to overflow classrooms, Waco Modular' range of aesthetically designed units are built in the controlled environment of the Waco Modular factory. Renowned for their build quality, Waco Modular Cabins can be tailored to your exact requirements.

A range of interior options are available to enhance comfort, security and productivity.

Delivered and installed by our professional team, Cabins are a faster solution than traditional brick and mortar and can be used immediately.

Waco Modular has a Sub-Saharan rental fleet of standard sized units available for immediate delivery.



Top 5 Reasons to Use Cabin Solutions



Aesthetically pleasing



Immediately usable



Fast delivery



Versatile and durable

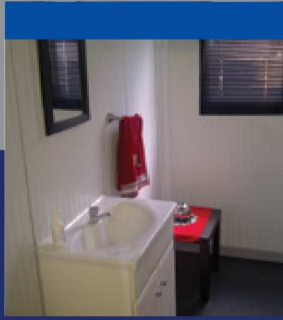


Relocatable



Specifications

Chassis	Manufactured from 2.5mm or 3mm steel lipped channel with heavy duty cross members welded together into a rigid ladder frame.
Floor	21mm thick CCA treated exterior grade shutter ply board on steel supports vinyl sheets.
Walls	White sandwich panel with 40mm or 60mm Polystyrene or 40mm Polyurethane core with 0.5mm Chromadeck on both sides. Interlocking flush weather-proof joint. Core material is fire retardant.
Roof & Ceiling	White interlocking sandwich panel with 0.5mm profiled Chromadeck top skin, 50mm polystyrene core and 0.5mm Chromadeck inner skin, which serve as the ceiling. The roof panel has an interlocking profile, which gives a weather-proof joint. Chromadeck fascia are fixed externally.
Rain Water Management	Optional PVC gutters and downpipes available on double wide buildings.
Windows	Top hung windows are made from anodized aluminium with 4mm panes. Colour coded aluminium frames can also be supplied. Standard burglar bars or Spanish burglar bars available on request.
Doors	Exterior – Chromadeck frame with Chromadeck panel infill, fitted 3-lever lock. Exterior – Aluminium with laminated glass panes, fitted with cylinder lock. Interior – Chromadeck frame with Chromadeck panel infill, fitted 3-lever lock.
Electrical Installation	Building is wired up to an external junction box ready for service connection. All components are SABS approved and are surface or flush mounted. Electrical compliance certificates (COC) supplied with each building.
Air Conditioning	Available on request. Wall mounted or split units available.
Fittings and Plumbing	Can be provided to customer's requirements. Kitchens and bathrooms are all possible.
Trims	Exterior: Black or Traffic Green Chromadeck trims Interior: White
Floor Layout	Various standard floor layouts available. Alternative floor layouts can be designed on request.
Siting	Building sited on reinforced concrete slabs or reinforced concrete slabs and levelling jacks depending on site condition.



Waco Modular Footprint

Cape Town

Plot 15, 16, 22 & 23
Industrial Park
Cape Town Ostrich Ranch
Van Schoorsdrif Rd
Philadelphia, Cape Town
Tel: +27 (0) 11 397 8150
Cell: +27 (0) 60 996 5877

Kathu

N14, 7km from Kathu on
Kuruman Road, Shosholoza
Plant Hire Yard, Kathu
Tel: +27 (0) 11 397 8150
Cell: +27 (0) 79 886 9535

Botswana - Gaborone

Plot 12365, Tlokweng,
Gaborone, Botswana
Tel: +27 (0) 11 397 8150
Cell: +27 (0) 72 225 2481

Zambia - Lusaka

Plot 397A/3/B, Kafue Road,
Makeni, Lusaka, Zambia
Tel: +26 (0) 968 491 061
Cell: +26 (0) 968 192 627
Tel: +27 (0) 11 397 8150

Durban

7 Gourlay Drive, Ballito
Service Park, Ballito
Tel: +27 (0) 11 397 8150
Cell: +27 (0) 79 433 1622

Rustenburg

12 Coetzer Street, Industrial
Area, Rustenburg
Tel: +27 (0) 11 397 8150
Cell: +27 (0) 82 464 7743

Mozambique - Palma

EN 247, Destrito de Palma,
Bairro de Ncalanga, Palma,
Mozambique
Tel: +27 (0) 11 397 8150
Cell: +258 84 310 7606

Johannesburg

No 2, New Gold Street,
Boksburg
Tel: +27 (0) 11 397 8150
Cell: +27 (0) 71 360 0721

Pomona (Head Office)

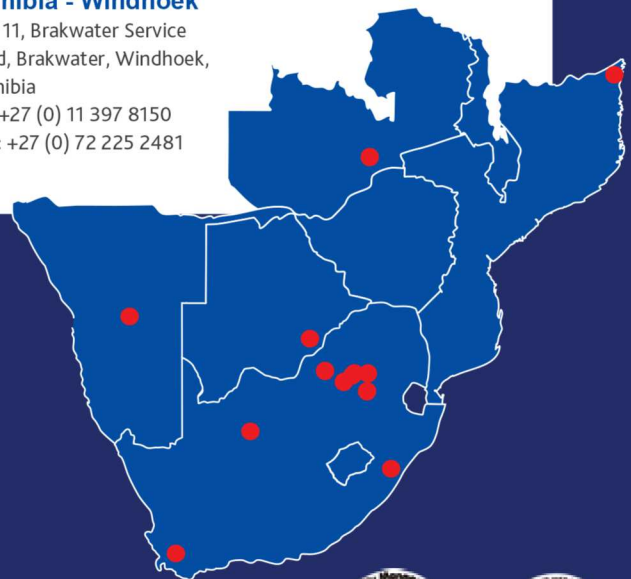
160 Main Street, Pomona
AH, Kempton Park
Tel: +27 (0) 11 397 8150

Secunda

Greenfields Contractors
Area, Greenfields Road,
Secunda
Tel: +27 (0) 17 004 0087
Cell: +27 (0) 72 558 6092

Namibia - Windhoek

Plot 11, Brakwater Service
Road, Brakwater, Windhoek,
Namibia
Tel: +27 (0) 11 397 8150
Cell: +27 (0) 72 225 2481



We are
WACO

Waco Modular | A division of Waco International

Head Office: 160 Main Street, Pomona AH, Kempton Park

Tel: +27 11 397 8150 E-mail: sales@wacomodular.com www.wacomodular.com

